



# WHATCOM COUNTY CHIEF DEPUTY PUBLIC DEFENDER

## Application Process

Submit cover letter, resume and completed [Whatcom County application](#) online by **September 27, 2019**.

Whatcom County  
Human Resources  
311 Grand Ave. Ste 107  
Bellingham, WA 98225

HR@co.whatcom.wa.us  
ph: (360) 778-5300

## Save-the-Date

- Interviews will be conducted the first or second week of October.

## Salary & Benefits

**\$8,583 - \$11,616 monthly, DOQ**

Whatcom County offers a comprehensive benefits package with medical, dental and vision coverage for employees, spouses and eligible dependents. Our benefits package also includes attractive paid leave provisions, including a Paid Time Off program, an average of 12 paid holidays per year, and short- and long-term disability coverage and life insurance for employees.

Employees participate in the Washington State Retirement System and may select from two deferred compensation programs. The County provides a match of up to 2% of salary for deferred compensation plan contributions.



Whatcom County seeks an experienced criminal defense attorney with management experience to assist the Public Defender in all legal and administrative functions of the Public Defender's Office. The office of the Public Defender serves indigent clients in Whatcom County and is currently staffed by 32 employees, including deputies, investigators, support staff, and a behavioral health specialist.

## ESSENTIAL JOB DUTIES

- Handles a partial case load involving highly complex and sensitive felony criminal cases.
- Serves as trial counsel.
- Administrative Duties include:
  - Planning, organizing, staffing, coordinating and directing the efforts of staff attorneys to accomplish the mission, goals, and vision of the Public Defender's office and the County.
  - Participating as a management team member in intra-department planning activities including defining department goals and objectives, developing and justifying budget requests and recommendations.
  - Managing programs and staff in a manner that ensures expenditures remain within budget guidelines.
  - Ensuring compliance with department/County policies and procedures, collective bargaining agreements, and legal requirements.
  - Developing relationships with co-workers and staff and individuals outside County government that encourage participation, teamwork, effective relationships and use of resources.

## QUALIFICATIONS

- 7 years progressively responsible trial practice experience as a public defender or equivalent, with a full caseload, including class A felonies and homicides.
- 3 years of management/supervisory experience.
- Must be a current member in good standing with the Washington State Bar Association.

***"An Opportunity to Distinguish Yourself in Public Service  
and Make a Commitment to Whatcom County's Future"***

See full [job description](#) for more information or visit [www.whatcomcounty.us/jobs](http://www.whatcomcounty.us/jobs)



# WHATCOM COUNTY CHIEF DEPUTY PUBLIC DEFENDER

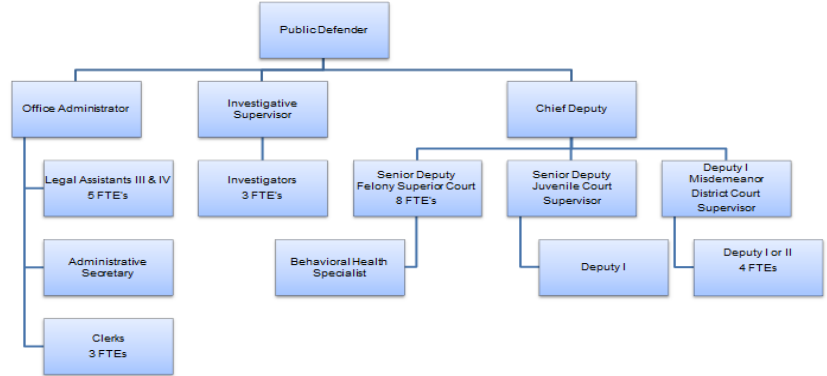
## DEPARTMENT OVERVIEW

Created in 1982 by County ordinance, the Public Defender's Office provides indigent legal defense for felony, misdemeanor and probation violation charges against adults and juveniles in Whatcom County Superior and District Courts and for individuals undergoing involuntary mental health and alcohol commitment proceedings.

The overall mission of the department is to provide high quality legal representation as efficiently and economically as possible, while maintaining the confidence of clients that they are receiving competent and skilled representation.

The Public Defender's Office also works with other branches of the criminal justice system (the Washington State Bar Association, the Office of Public Defense, Department of Social and Health Services, and the Attorney General's Office) to continue the implementation and expansion of drug court, family treatment court and mental health court in Whatcom County.

For more information visit <http://www.whatcomcounty.us/311/Public-Defender>. You may also view the Public Defender's Office [2019-2020 Budget](#) online.



## BE PART OF OUR COMMUNITY

Whatcom County, Washington, is truly "Someplace Special." Nestled along the Canadian border, beautifully positioned between the San Juan Islands and the Cascade mountain range, our scenic community is made up of approximately 212,000 people. Seattle is 90 miles to the south and Vancouver, British Columbia, is 50 miles to the north.



According to Money Magazine, "Bellingham is the 5th best place to live in the West and the 24th best place in the nation to live." Citizens of Whatcom County enjoy the breathtaking scenic beauty of coastlines, Bellingham Bay, Mount Baker and many spectacular parks and lakes. National Geographic Adventurer magazine named Bellingham among the "Top 10 Adventure Towns in America". Bellingham was rated the 3rd most secure mid-sized U.S. city to live in by Farmers Insurance in 2010. Bellingham has been previously rated by Money Magazine as the 2nd best place in the country for entrepreneurs, and by Inc. as 6th out of 393 boomtown cities in the U.S.

For more details about our wonderful community, visit Bellingham's Chamber of Commerce website at [www.bellingham.com](http://www.bellingham.com).

